

Pressure Control Panels - Automatic Change Over System

VSP-3AE Series

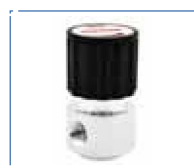
Automatische Umschaltstationen (mit Spülung)

Product Features

- Pressure control panels with automatic change-over function
- VSR-1E series single-stage regulator
- Brass chrome plated body and bonnet for non-corrosive gases and mixtures up to grade 6.0
- Stainless steel 316L body and bonnet for corrosive gases
- Diaphragm type shut-off valves
- Modular design
- Suitable for inlet pressure up to 300 bar
- Easy installation into safety cabinet for gas cylinders
- Tested for use with oxygen

Typical Applications

- Component Testing
- Calibration Systems
- Laboratory Pressure Control
- High Pressure Sampling Systems
- Service & Test Equipment

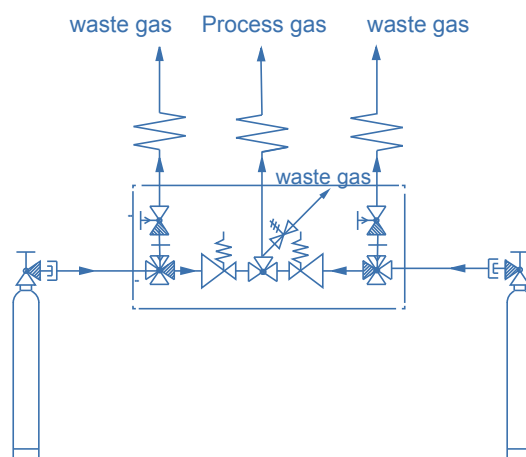


VDV1 for inlet 200bar

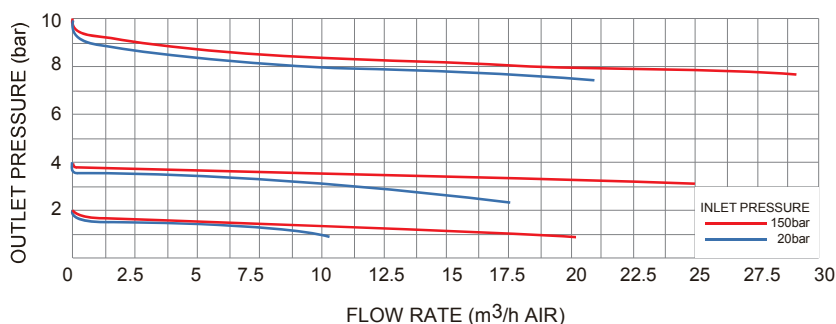
Technical Data

Type:	single-stage
Inlet pressure P ₁ :	max. 300 bar
Outlet pressure P ₂ :	2/4/10/20/50/100 bar
Materials:	
Body regulator and valves:	see ordering info
Valve seat (regulator):	PCTFE
(shut-off valve):	PCTFE(VDV30) PEEK(VDV1)
Diaphragm (regulator):	Hastelloy® C276
(valve):	Elgiloy®
O-ring: (option)	Viton® (FKM) Kalrez® (FFKM)
Filter:	SS 316L
Temperature range:	-30°C to +74°C
Leak rate: (to atmosphere)	1x10 ⁻⁸ mbar l/s He
(via seat)	1x10 ⁻⁶ mbar l/s He
Weight:	4.8 kg

Schematic Drawing



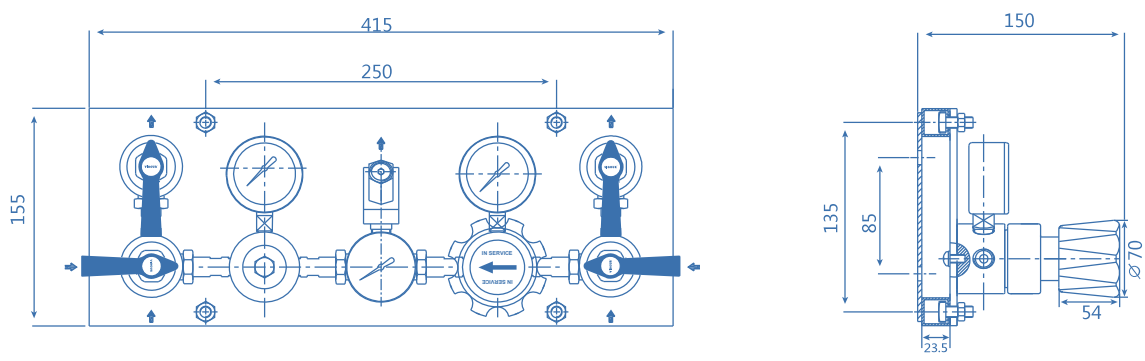
Flow Chart



Pressure Control Panels - Automatic Change Over System

Automatische Umschaltstationen (mit Spülung) VSP-3AE Series

Dimensions (mm)



Ordering Information

VSP - 3AES - 300 - 10 - P - P - N₂ - X

<p>Body Material</p> <p>S: 316L C: chrome plated brass B: brass</p> <p>Inlet Pressure P₁</p> <p>40: 40 bar 100: 100 bar 200: 200 bar 300: 300 bar - with VDV30 (lever handle)</p> <p>Outlet Pressure P₂</p> <p>2: to 2 bar 4: to 4 bar 10: to 10 bar 20: to 20 bar 50: to 50 bar 100: to 100 bar</p>	<p>Option</p> <p>X: without purge module <small>(Check valve or shut-off valve is recommended.)</small></p> <p>Gas Type</p> <p>Please specify gas type</p> <p>Outlet Pressure. Indication</p> <p>P: Pressure gauge</p> <p>Inlet Pressure. Indication</p> <p>P: Pressure gauge K: Contact gauge</p>
---	--

* Outlet pressure more than 20 bar, please contact factory.
* 50/100 bar system w/o relief valve.