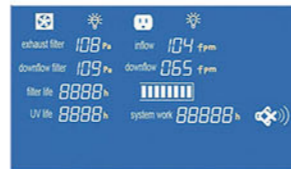




# NSF Certified Class II A2 Biological Safety Cabinet



LCD display for BSC-4FA2, BSC-4FA2-GL and BSC-6FA2-GL



LCD display for BSC-4FA2-NA and BSC-6FA2-NA

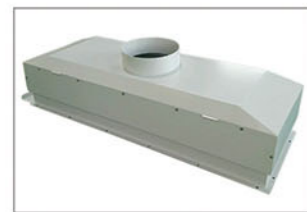
**LCD Display**  
Large LCD display is easy to monitor all the safety parameters at a glance; and ergonomically sized control panel improves users interface.



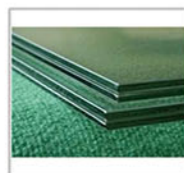
LCD display for BSC-3FA2-GL



LCD display for BSC-3FA2-NA



Exhaust Thimble canopy(Optional)



**Front Window**  
Two-layer laminated toughened glass >6mm, Anti UV



**Footmaster Caster**  
Universal caster with brake and leveling feet.



**SS Water Tap & Gas Tap**



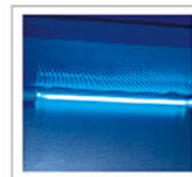
**Waterproof Socket**



Stainless Steel I.V. Bar with 10 hooks



**Work Zone**  
Unibody design



**UV Lamp**  
Emission of 253.7 nanometers for most efficient decontamination.

## ADVANTAGE

1. Motorized front window.
2. Large LCD display, all information displayed.
3. Automatic air speed adjustable with filter block.
4. With memory function in case of power-failure.
5. Side & back wall is made up of single piece stainless steel.
6. Interlock function: UV lamp and front window; UV lamp and blower, fluorescent lamp; Blower and front window.
7. Front 10° slanted to offer operator comfort while working for long time, reduce glare and maximize reach into the work area.

## TECHNICAL PARAMETERS

Model	BSC-4FA2	BSC-3FA2-GL BSC-3FA2-NA	BSC-4FA2-GL BSC-4FA2-NA	BSC-6FA2-GL BSC-6FA2-NA
External Size(W*D*H)	1383*775*2295mm	1087*775*2265 mm	1383*775*2295mm	1873*775*2295mm
Internal Size(W*D*H)	1210*600*660 mm	910*600*660 mm	1210*600*660 mm	1700*600*660 mm
Work Surface Height	750mm with optional base stand			
Max Opening	550mm (22")	520mm(20.5")	550mm (22")	550mm (22")
Tested Opening	Safety height 200mm (8")		Safety height 254mm (10")	
Airflow Volume	Inflow	462m³/h (272cfm)	445m³/h(259cfm)	587m³/h(346cfm)
	Downflow	65%: 863m³/h (507cfm)	60%: 649m³/h(382cfm)	60%: 863m³/h(507cfm)
	Exhaust	35%: 462m³/h (272cfm)	40%:445m³/h(259cfm)	40%: 587m³/h(346cfm)
Front Window	Motorized. Two-layer laminated toughened glass ≥6mm. Anti UV.			
HEPA Filter	Two, 99.995% efficiency at 0.3µm, filter life indicator.			
Filter Guard Type	Aluminum alloy frame, glass fiber filter paper			
Noise	NSF 49≤67dB			
Illumination	≥1000Lux			
Display	LCD Display			
Waterproof Socket	Two, Total consumption: ≤500W			
Tap	Water tap*1, Gas tap *1			
Ground Resistance	≤ 0.10Ω			
Power Supply	AC230V, 50/60Hz; AC115V, 60Hz, Full load Amps: 9A, BTU/Hr: 1689			
Consumption	500W	400W	500W	700W
Alarm	Abnormal airflow velocity; Filter replacement; Front window at unsafe height; High filter pressure alarm			
DC Motor	One ECM motor, 115V& 230V acceptable, Speed adjustable, high efficiency and low power consumption			
Material	Working area: 304stainless steel Frame and Decorative Plate: cold-rolled steel with anti-bacteria power coating			
UV Lamp	30W	20W	30W	40W
	Germicidal UV lamp, Emission of 253.7 nanometers for most efficient decontamination			
Illuminating Lamp	18W*2	10W*2	18W*2	22W*2
	LED lamp			
Standard Accessory	LED lamp*2, UV lamp*1, Base stand, SS water tap*1, SS gas tap*1, Drain valve, Waterproof sockets*2, Stainless Steel IV Bar with 10 hooks,Remote control			
Optional Accessory	Armrest, Airflow tester, Formalin fumigation sterilizer,Infrared sterilizer, Electric height adjustable base stand			
Package Size (W*D*H)	1540*1080*1900mm	1240*1060*1900mm	1540*1080*1900mm	2020*1080*1900mm
Gross Weight	340kg	270kg	340kg	370kg