



DISPOSABLE PROTECTIVE CLOTHING & CONTAMINATION CONTROL

CATALOGUE



C56

Type 5 & 6 Coverall

Type 5 & 6 coveralls are a superior quality garment manufactured from breathable liquid resistant microporous material. The material allows the skin to breathe whilst resisting the penetration of many different non-hazardous liquids and particles.

Features:

- Anti-Static to EN 1149-5
- Barrier to Radioactive Particles - Class 1
- Barrier to Infective Agents - EN 14126
- Low Lint Microporous Material
- Knitted Cuffs
- Self-Adhesive Flap Over Zip

Type 4 Coverall

Type 4 coveralls are a superior quality garment manufactured from breathable liquid resistant microporous material. Our Type 4 Garments have the extra feature of taped seams which provides added protection, allowing the garments to be classified to Type 4 Cat III.

Features:

- Anti-Static to EN 1149-5
- Barrier to Radioactive Particles - Class 1
- Barrier to Infective Agents - EN 14126
- Low Lint Microporous Material
- Knitted Cuffs
- Self-Adhesive Flap over Zip



C56PLUS

MORE INFORMATION

The information in this catalogue regarding coveralls is limited. Please enquire for more details.

MORE INFORMATION



C56SMS

Type 5 & 6 SMS Coverall

Manufactured from breathable liquid resistant SMS material. The material resists the penetration of many different non-hazardous liquids and particles.

Features:

- Type 5 & 6 Certified Category III
- Ideal for protection against asbestos fibres during removal operations
- Elasticated Cuffs



Available in: Blue White Red



N56-ST

STERILE Type 5 & 6 Coverall

The sterile Type 5 & 6 Coverall with Hood is a single use disposable garment featuring a front zip with protective flap, elasticated hood, back, cuffs and ankles and thumb loops to ensure a secure hold. The sterile Type 5 & 6 Coverall provides exceptional comfort and protection, even when handling cytotoxic drugs.

Features:

- Gamma Irradiated
- Lint free Microporous Material
- Suitable for ISO Class 4 and EU GMP Grade A

Chemsplash Cool Type 5 & 6 Coverall

The Chemsplash Cool Coverall is made from white 55gsm microporous laminated fabric and a blue 50gsm SMS Breathable Back Panel. This results in a Cat III Type 5 & 6 suit which offers the best combination of a high chemical splash and a hazardous particle barrier with much improved breathability and comfort.

Features:

- 55gsm Microporous Laminate Fabric
- Breathable SMS Back Panel
- Latex and Silicone Free
- Non-Linting
- Anti-Static



CS-C

Disposable Laboratory Coat

A superior quality garment manufactured from breathable, liquid resistant, microporous material. This material allows the skin to breathe while resisting the penetration of many non-hazardous liquids and particles. Manufactured from the same material as the Optimum Type 5 & 6 Coveralls. Typical applications include laboratory, low classification cleanroom, pharmaceutical, food processing, packing areas and medical.

Features:

- Manufactured from 53g Microporous material
- High Quality Zip
- Latex Free Knitted Cuffs
- Product is made following EN1149-5 dissipate electro-static energy standards



11112-1

Disposable Visitors Coat

Manufactured from 40g spunbond polypropylene. This is a strong, durable material offering basic protection.

Features:

- Collar
- Strong, durable fabric
- Quality Zip or Velcro Options
- No Pockets
- Generous cuts for comfort



11112-2

Disposable Plastic Apron - FLAT PACK

Our range of medium duty aprons will ensure a high level of hygiene for many industries including catering, medical, first aid and janitorial. These aprons are packed in flat packs, with 1000 aprons per carton (10 x packs of 100 aprons), and are available in blue and white.

Features:

- 42" (107cm) in length
- 13 micron thickness gauge
- Packaged in flat packs of 100 aprons
- Available in White and Blue
- Universal Size



APRON-FP

Available in: Blue White

Disposable Plastic Apron - ROLLS

Our range of medium duty aprons are available in a wide range of colours, and will ensure a high level of hygiene for many industries. These aprons are packed perforated on a roll, and are available in 7 different colours (see below).



Features:

- 42" (107cm) in length
- 15 micron thickness gauge
- Packaged in rolls of 200 aprons
- Wall Dispenser Available
- White aprons also available in a biodegradable option



Available in: Red Orange Yellow Green Blue White Pink

APRON-R

Disposable Oversleeves

Typical applications include laboratory, pharmaceutical, food processing, forensic science and medical.

Features:

- Lint Free Microporous Material
- Elasticated or Knitted Cuffs
- Suitable for Multiple Applications



03-1



03-2



03-4

PRODUCT	DESCRIPTION
03-1	Elasticated Oversleeves
03-2	Knitted Oversleeves
03-4	Blue Plastic Oversleeves



TP-C-004

Surgical Cap

Non-Woven surgical cap offers hair protection with ties for easy use. 5 layers soft white sweat pad sewn inside making it comfortable while in use.

Features:

- Tie Back Straps
- Sewn in Sweat Pad
- Hair Protection
- Non-woven

Peaked Bouffant Cap

Provides hair protection for long hair as well as head protection making them ideal for a wide range of applications including food processing, laboratories, pharmaceutical and cleanrooms.

Features:

- Comfortable
- Non-Woven
- Peaked Cap for Increased Protection



TP-C-010



TP-C-009

Snood Cap

Snood caps offer ultimate hair coverage protection. These snood caps are ideal for a range of applications including food processing, laboratories, pharmaceutical and cleanrooms.

Features:

- Non-Woven
- Comfortable
- Suitable for short to medium length hair
- For long hair, Consider the Bouffant style

Peaked Cap

Provides minimum hair protection as well as head protection, making them ideal for a wide range of applications including food processing, laboratories, pharmaceutical and cleanrooms.

Features:

- Comfortable
- Non-woven
- Peaked Cap for increased protection



TP-C-008



DM01

Bouffant Cap

Protection against hair contamination, for people with long hair. With an elasticated headband for a close, comfortable fit.

Features:

- Elasticated Bouffant Cap
- Manufactured from thermally bonded polypropylene fibre
- Encapsulated double stitched elasticated edge



Available in: White

Mob Cap

Protection against hair contamination, for people with short hair. With a range of colours to choose from, these mob caps are ideal for hygienic colour-coded environments.

Features:

- Manufactured from thermally bonded polypropylene fibre
- Encapsulated double stitched elasticated edge



Available in: Red Yellow Green Blue White



DM02



TP-C-034

Disposable Hood

Full head and neck protection makes these hoods ideal for a range of procedures including chemical and pharmaceutical and cleanroom activities.

Features:

- Comfortable
- Cover to the Neck for Extra Protection
- Suitable for a Range of Applications

Beard Snood

Offers protection to product and process from contamination by facial hair.

Features:

- Non-woven
- Elasticated ear loops



04-1

6

GLOVES

Latex Glove

A single use disposable glove made from natural latex which offers excellent dexterity for precise applications and product protection. Ambidextrous design with a rolled cuff for extra strength. Chlorinated finish makes the gloves easier to fit without the use of powder. Suitable for applications such as pharmaceutical, veterinary, motor mechanics, food processing, chemical processing, handling biohazards and clean rooms.

Features:

- Ambidextrous design
- Rolled cuff
- Powder free
- Chlorinated finish
- Sold in cases of 1000 (10 x boxes 100 gloves)



02-1

Nitrile Glove



A single use non-sterile glove for Minimal Risk applications. Ambidextrous design with a rolled cuff for extra strength. Smooth, soft and easy to fit.

Features:

- Made from 100% nitrile
- Chlorinated on both sides for easier donning and improved grip
- Free from natural latex and safe for use by latex sensitive individuals
- Powder free
- Sold in cases of 1000 (10 x boxes 100 gloves)



02-2

Available in:  Blue  Purple

STERILE Gloves

This sterile glove provides a secure grip on instruments for easy, sure handling in both wet and dry conditions. It delivers comfort, elasticity, and sensitivity, plus a natural fit that helps prevent hand fatigue.

Features:

- Very high tear resistance
- Resistant to alcohol-based hand disinfectants
- Resistant to viral penetration
- Greater patient protection
- Low particle levels
- Sold in cases of 400 (10 x boxes 40 gloves)



80108

Nitrile Gloves

With superior grip and excellent ESD properties, Nitrile Gloves are latex-free, powder-free and resistant to a wide range of chemicals. The ambidextrous, white, 300mm long nitrile cleanroom gloves feature beaded cuffs for strength and have textured fingers for enhanced grip. Suitable for ISO Class 5 Cleanrooms.

Features:

- Powder and Latex Free
- Resistant to a wide range of chemicals
- Beaded cuff for extra strength and textured fingers for improved grip



CPE Overshoe

Our shoe covers offer hygienic protection from outdoor shoes.

Features:

- Water resistant
- Manufactured from a thicker gauge material than most other CPE overshoes
- Suitable for UK Size 5 to 11 shoes
- Elasticated



01-1

Anti-Slip Overshoe

This overshoe is intended to offer hygienic protection from shoes. Each overshoe sole is embossed with a rubber pattern which has been specifically designed to reduce slipping.

Features:

- Splash Resistant
- Rubber Pattern Reduces Slipping
- 2 sizes - regular and large



01-2

CPE/PP Anti Slip Overshoe

Heavy duty CPE sole with anti-slip properties due to micro-indentations.

Features:

- Water resistant
- Manufactured from a thicker gauge material than most other CPE overshoes
- 2 sizes - regular and large
- Elasticated



01-2-CPEPP

Microporous Overshoe

Microporous material is soft and breathable, strong and resistant to chemical splash. Suitable for a variety of applications.

Features:

- Low lint
- Protects the wearer from their environment or the environment from the wearer
- Suitable for UK shoe Size 5 to 11



01-3

Anti-Slip Microporous Overshoe

Suitable for a variety of applications. Suitable for cleanroom applications. Sole is made with PVC material making the shoe more slip resistant.

Features:

- Anti-Slip Sole Material
- Low lint
- Suitable for UK shoe Size 5 to 11



01-3AS



01-4

Microporous Overboot

This overboot is soft and microporous, strong and resistant to chemical splash and dust and can be used for a wide range of applications. Reduces microbiological growth and contamination in aseptic conditions.

Features:

- Anti-static
- Low Lint Material
- Can be Worn Over Outdoor Shoes
- One size fits all
- Elasticated top with secure ties

Anti-Slip Microporous Overboot

This overboot is soft and microporous, strong and resistant to chemical splash and dust and can be used for a wide range of applications. Boot incorporates a PVC anti-slip sole.

Features:

- Anti-static
- Low Lint Material
- Can be Worn Over Outdoor Shoes
- The anti-slip sole reduces the risk of slip
- One size fits all
- Elasticated top with secure ties



01-5



N1-5-ST

STERILE Overboot

Features:

- CleanTough™ fabric. Sole laminated with slip resistant Safe-Step™ material.
- Elasticated top with secure ties and non-slip soles
- Gamma Irradiated
- IPA resistant ink ensures that bags can be wiped down with cleaning or sterilising fluids without fear of cross-contamination from printing inks.
- ISO Class 4 & EU GMP Grade A compatible
- One size fits all

CONTROLLED ENVIRONMENT DRESS CODE

9

1

Hair net or hood to cover hair and ears completely



2

NO Makeup

3

Coverall zip to be pulled up fully and flap to be sealed with self-adhesive strip



Watches and wrist jewellery to be removed

4

Protective Coverall

5

Overboots or overshoes to cover outdoor shoes

6

Latex Gloves:

Single use non-sterile glove for minimal risk applications.

Chlorinated finish makes glove fit easily without using powder.



Nitrile Gloves:

Single use non-sterile glove for minimal risk applications. Free from natural latex – safe for use by latex sensitive individuals.



Sterile Gloves:

High levels of resistance to tear, alcohol-based hand disinfectants, and viral penetration. Low allergenicity assured.



Overboots:

Resistant to chemical splash and dust. Available with standard or anti-slip sole. Sterile option also available for cleanroom applications.

Microporous Over-shoe:

Soft, breathable and strong. Available with standard or anti-slip sole.

CPE Overshoe:

Offer hygienic protection from outdoor shoes. Water resistant. More hardwearing than most CPE overshoes.

Anti-slip overshoe:

Each overshoe sole embossed with a rubber pattern designed to reduce slipping. Hardwearing and splash resistant.

CPE/PP Anti-slip Overshoe:

Heavy duty CPE sole with anti-slip properties due to micro-indentations.



TP-M-001

Surgical Face Mask with Ties

Non irritating mask that provides high quality filtration from airborne particles and offers easy breathability. Includes tie back straps. Suitable for a range of procedures including medical, food processing, laboratories and cleanrooms.

Features:

- 3-ply spun bond polypropylene
- Tie back
- 17.5cm x 9.5cm

Surgical Face Mask with Ear Loops

Non irritating mask that provides high quality filtration from airborne particles and offers easy breathability. Ideal for hospital or clinical environments, they are comfortable with low breathing resistance. Includes ear loops. Suitable for a range of procedures including medical, food processing, laboratories and cleanrooms.

Features:

- 3-ply spun bond polypropylene
- Ear loops
- 17.5cm x 9.5cm



TP-M-002

Surgical Face Mask with Face Shield

Non irritating mask that provides high quality filtration from airborne particles and offers easy breathability. Includes eye shield which makes for better protection. Suitable for a range of procedures including medical, dental, food processing, laboratories and cleanrooms.

Includes built in transparent eye shield.

Features:

- 3-ply, 3 fold comfortable design
- Eye protection
- 17.5cm x 9.5cm



TP-M-003

80% of Contamination Enters Your Critical Area at Ground Level

JAG Cleanroom supplies tacky floor mats have been laboratory tested to reduce microbe contamination with up to 98% efficiency and particulate contamination up to 65%. (See laboratory reports on our website)

Tacky floor mats are a cost effective solution to reduce foot borne contamination into your cleanroom, laboratory or even to contain dust contamination in construction areas.

The mat is simply stuck to the floor near an entry or exit door, by removing the rear protective backing layer. Each tacky mat layer is then peeled off when dirty to reveal another new layer. Each layer is coated with a high tack adhesive which removes dust or dirt contamination.

JAG Cleanroom supplies tacky mats are available in various sizes, and in Blue and White. If a larger floor area requires protection, multiple mats can be laid side by side.

Features:

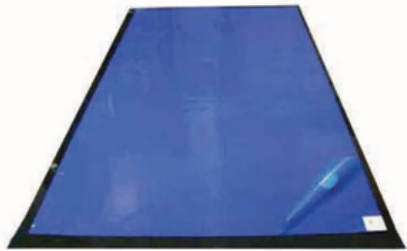
- The mats can last several weeks at a time - dependent on use/application
- Optional floor frames are also available (see page 15)
- 30 easy peel, numbered, polyethylene sheets per mat

Product Code	Description	Dimensions (L x W)
TM-B	Blue Tacky Mat SMALL	95 cm x 45 cm
	Blue Tacky Mat MEDIUM	115 cm x 46 cm
	Blue Tacky Mat LARGE	115 cm x 66 cm
TM-W	White Tacky Mat SMALL	95 cm x 45 cm
	White Tacky Mat LARGE	115 cm x 66 cm



Plastic Tacky Mat Floor Frame

Low profile floor plate, manufactured from tough, heavy duty Black 1.5mm Polypropylene, to retain Tacky Mats and preserve the floor finish from the adhesive mat. Recommended particularly for carpeted floors. Also protects from adhesive residue on painted or vinyl floor finishes.



1TMF-P

Features:

- Retains Tacky Mats and protects floor finish
- Reusable Plate to Suit Our Mats
- Anti-Skid Double Sided Adhesive Stripes on Bottom

Product Code	Description	Dimensions (L x W)
1TMF-P	Plastic Tacky Mat Frame SMALL	100 cm x 50 cm
	Plastic Tacky Mat Frame MEDIUM	120 cm x 50 cm
	Plastic Tacky Mat Frame LARGE	120 cm x 70 cm

Stainless Steel Tacky Mat Floor Frame

Manufactured from 304 grade, 0.7mm thick Stainless Steel floor plate to retain Tacky Mats and preserve the floor finish from the adhesive mat. Low profile, which means it's less of a trip hazard. Stainless Steel is strong and durable.

Features

- Retains Tacky Mats and protects floor finish
- Reusable Plate to Suit Our Mats
- Anti-Skid Double Sided Adhesive Stripes on Bottom
- Strong and Durable Stainless Steel



1TMF-S

Product Code	Description	Dimensions (L x W)
1TMF-S	Stainless Steel Tacky Mat Frame SMALL	100 cm x 50 cm
	Stainless Steel Tacky Mat Frame MEDIUM	120 cm x 50 cm
	Stainless Steel Tacky Mat Frame Large	120 cm x 70 cm

Non-Sterile Isopropanol Alcohol

Features

- Cleaning and de-greasing electrical and electronic components
- A disinfectant for hard surfaces
- Antiseptic and antibacterial agent
- Excellent for cleaning glass & lenses. Evaporates quickly and leaves surface clean
- A specialist cleaner
- Sterilizing utensils
- An Anti-Foamer and foam inhibitor
- Removing sticky labels and glue
- A graffiti remover for removing inks, markers, lipstick etc
- Also available sterile



1219-70

See our website: www.jagcleanroomsupplies.com.

For information about our other chemicals, contact us, please see our website www.jagcleanroomsupplies.com

STERILE Cellulose/Polyester Cleanroom Wipes

JAG Cleanroom Supplies Sterile wipes are a superior quality, ultra-low lint, sterile clean room dry wipe. This fabric blend combines the high absorbent properties of natural fibre along with the cleanliness and strength of synthetic material. Very good absorbency. Not recommended for abrasive use.

Features

- 55% Cellulose, 45% Polyester
- Suitable for ISO Class 6-8 clean rooms (FED 1000 to 100,000)
- Absorbs and retains solvents and chemicals
- Superb wet strength and absorbency
- Double Bagged

STERILE Polyester Cleanroom Wipes

JAG Cleanroom Supplies Sterile wipes are a superior quality, ultra-low lint, sterile clean room dry wipe. This laser edge sealed Polyester wiper has high absorbent properties combined with cleanliness and strength. Suitable for low-abrasive applications.

Features

- 100% Single Knit Polyester
- Absorbs and retains solvents and chemicals
- Superb wet strength and absorbency
- Fully laser sealed border to avoid particle release
- High abrasive and dissolvability resistance
- No detectable silicone, amide or DOP
- Sterilised by gamma irradiation

Wipes

Designed to swiftly and cleanly remove contaminants, the wipes contain a water-based tackifier. They do not dry out like traditional tack cloths, making them last longer. The cloths are designed for dust removal on smooth or glazed surfaces, without the need for cleaning solutions. They offer solvent free cleaning, with no unpleasant smells or sticky residue on either your hands or the surface.

Wipes:

- Silicone Free
- Excellent Dust Pick-Up
- Easy to Use
- Size (mm): 610 x 370

Super Wipes:

- Silicone Free
- Excellent Dust Pick-Up
- Easy to Use
- Size (mm): 610 x 370
- More durable than the regular

Cleanroom Mop

Whether in a cleanroom, laboratory, surgery room or any other critical application, our folding cleanroom mop cleans floors, walls and other surfaces efficiently and is designed for ease of use. For efficient cleaning.

The mop head includes a telescopic pole to allow adjustment for the user. Manufactured from strong and durable components, the system is designed with minimal crevices.

Features:

- Sterile Mop covers available
- Head is lightweight and durable
- Mop head is Autoclavable
- Handle Made from Anodized Aluminium
- Covers have High Tear Strength
- Includes Telescopic Handle
- Mop head collapses to fit renewable mop covers



FFM-10

Non-Sterile Foam Covers for Flat Mop

A foam cover for use with the Flat Mop. Manufactured using absorbent polyurethane foam, with a polyester knit fabric laminate. Laser cut and cleanroom laundered to minimize fibre and particle release. 10mm thickness provides a cushioned surface for optimum conformance to uneven floors, walls and ceilings. Compatible with a wide range of chemicals, disinfectants and cleaners. Autoclavable and compatible with gamma and ETO sterilisation.

Features:

- Suitable for use with Flat Mop
- Dimensions: 380mm (11.5") x 115mm (4.5") x 10mm (0.4")
- Laser cut and cleanroom laundered
- High absorbency capacity
- Autoclavable and compatible with gamma and ETO sterilisation
- Compatible with a wide range of chemicals, disinfectants and cleaners
- Available in packs of 10



FMC6LF12

Cleanroom Paper

Made with the purest quality cellulose from specially selected forests and is specially coated to minimize particle and fibre release.

Suitable for Class A, B & C or ISO Class 3–7 cleanroom applications. For use in writing, copying, and printing within controlled environments. Two different types available; Cleanroom Paper.

Cleanroom Paper

Cleanroom Paper is used like normal paper, for writing, copying and printing, and is compatible with all standard photocopiers and laser printers without jamming.

Features:

- Specialised coating to reduce the release of particles, fibres and micro-organisms.
- Smooth surface reduces surface particle contamination
- Retains ink from copiers and laser printers to reduce smudging
- Double packed for cleanliness
- Can be gamma irradiated for sterile applications
- Size A3 - white or blue



CP0811A4

Cleanroom Paper

Cleanroom Paper is made from the same pure cellulose and the Cleanroom Paper, but is latex free and fully recyclable. It is designed for the highest level of contamination control in critical processing applications.

Like the standard cleanroom paper, it is compatible with photocopiers and laser printers without jamming, however, it is not recommended that you use it with inkjet printers.

Features:

- 100% Recyclable
- Latex and Talc free
- High strength and heat resistance
- Precision cut edges
- Steam autoclavable for aseptic applications
- Size A4 - white or blue

Cleanroom Notebook

Notebooks manufactured from Cleanroom Paper. Practical for note-taking and data recording in the cleanroom.

Features:

- A4 & A5 Sizes
- Paper weight = 85.5g
- Purest cellulose to minimise contamination
- Specially coated
- Double packed for extra protection
- Can be Gamma Irradiated
- Suitable for Class A, B & C and ISO Class 3-7 Cleanrooms
- Ruled Paper



NBK-CR

There are many different types of disposable gloves, each with a specific purpose. There are three main types of disposable gloves: Nitrile, Vinyl and Latex. Nitrile is rapidly becoming the material of choice for many healthcare workers, as it has similar properties to latex, but benefits from being free of any natural rubber latex proteins.

Nitrile

- Made from a synthetic rubber
- Excellent barrier protection – effective against all biological organisms
- Easy donning – inside of glove specially
- Provides excellent resistance to abrasions and punctures treated for easy donning alcoholic, aqueous and fatty
- Suitable for any food substances, including
- Latex Free

Latex

- Made from natural rubber
- Highly elastic
- Soft and comfortable to wear
- Superior Dexterity
- Resistant to rips and tearing
- Resistance to alcohols, detergents and alkalis
- Suitable for foods of an alcoholic, acidic or aqueous nature
- There is a possibility that some people may suffer from an allergy to natural rubber latex

Vinyl

- Synthetic Material
- Smooth finish
- Regulatory compliance
- Provide an excellent level of resistance to several substances, including acids, alkalis, most oils and petroleum-based hydrocarbons
- An ideal alternative for those who suffer from a latex allergy

Latex Allergy

An allergic reaction can be triggered in some individuals by coming into contact with natural latex rubber. An alternative to wearing latex gloves is to wear nitrile gloves due to their latex free nature. If the user still intends to wear natural rubber latex gloves, they are recommended to choose a lower protein version.

Legislation & Standards

EN 455: Medical Gloves for Single Use

This standard covers requirements and testing procedures for gloves for medical purposes.

The requirements are as follows;

Impermeability, Sizing, Strength and Thickness, Maximum Elasticity (both before and after accelerated ageing) and Biological Safety Qualities.

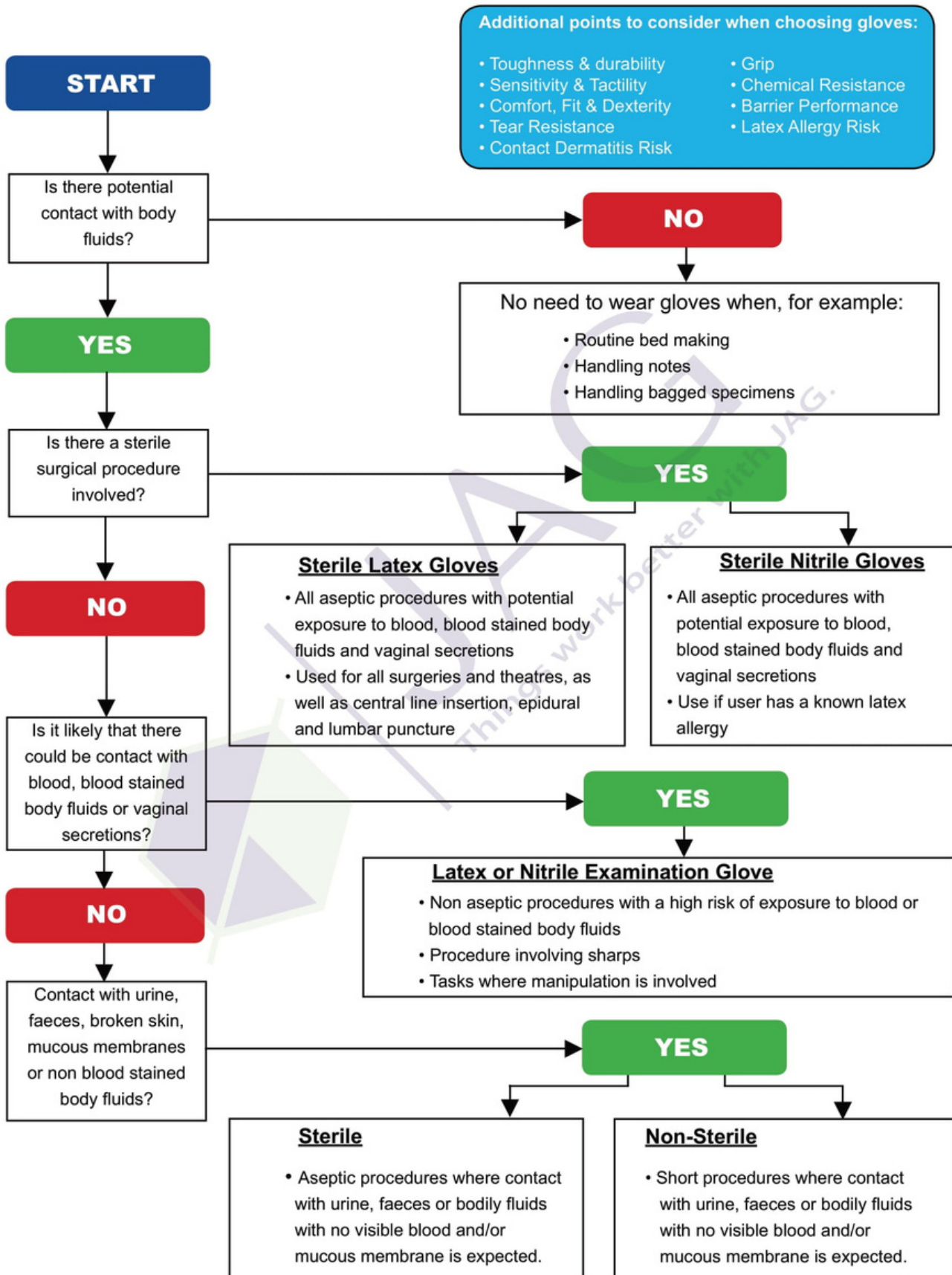
EN 374: Protective Gloves against Chemicals and Micro-Organisms

This standard covers the requirements for gloves to protect the user against chemicals and/or micro-organisms. It encompasses performance requirements, marking of gloves and what information must be supplied by the manufacturer, as well as describing the tests that determine resistance to penetration and resistance to permeation by chemicals.

IMPORTANT INFORMATION

- Gloves **DO NOT** replace efficient hand hygiene
- Ensure hands are washed before and after gloves are removed
- Always adhere to infection control guidelines

IMPORTANT INFORMATION



Portable Cleanroom Vacuum

- meets cleanroom standards up to & including Class 10 (ISO 4)

The GM 80CR is specifically designed and packaged for use in cleanrooms. Through its unique four-stage filtration system, the GM 80CR safely collects and retains fine dust and powders. It comes equipped with an ULPA exhaust filter (captures 99.999% of ultra fine particles, down to and including 0.12 microns). The GM 80CR's motor is interference suppressed so it will not affect electronic equipment in cleanrooms.

Features and Benefits

- In the first stage of separation, a 2.25-gallon capacity disposable paper bag captures the bulk of collected debris.
- Extra-large main filter ensures a steady, even airflow which extends filter life and eliminates premature clogging.
- The microfilter, a final step in pre-filtration, protects the motor and acts as a barrier to even bacteria-size particles.
- Motor thermal protection device prevents overheating caused by failure to keep filters clean or by accidental blockage in a nozzle or hose.
- Conductive plastic hose provides ESD protection.
- The wheeled trolley adds mobility. Glides over all surfaces.
- Positive twist safety latches offer security by preventing the container from opening if the vacuum is dropped.
- The vacuum cleaner and accessories are packaged in cleanroom compatible polyethylene bags to prevent contamination from packing materials during shipping.



Technical Specifications

Description	Unit	GM 80CR
Collection Type	-	Dry
Type of Power	-	1-Phase
Voltage @ 60 Hz	V	115 / 220
Power @ 60 Hz, max.	HP (W)	1.48 (1100)
Waterlift, max.	in. (mm) H ₂ O	84 (2134)
Airflow, max.	CFM (L/min)	80 (2265)
Current, max.	amps	10 / 5
Container Capacity	gallons (L)	3.24 (12.3)
HEPA Filter Area, downstream	ft ² (m ²)	3.55 (0.33)
ULPA Filter Area, downstream	ft ² (m ²)	4.95 (.45)
Dimensions (L x W x H)	in. (mm)	14 x 12 x 16 (356 x 305 x 406)
Weight	lb. (kg)	13 (5.9)
Cord Length	ft. (m)	30 (9.1)
Protection Class	-	IP40
Sound Pressure Level @ 6' 6"	dB(A)	61

Specifications and details are subject to change without prior notice.



VT 60 Wet/Dry Vacuums

- electric or pneumatic variations to meet industry requirements

The combination of efficient design and powerful suction allows the Nilfisk VT 60 Wet/Dry vacuums to simultaneously pick up wet and dry debris without special adapters or filter switching. Featuring a unique four-stage filtration system and multiple collection and disposal options, the versatility of these vacuums is ideal for multiple wet/dry applications.

While the standard VT 60 is an electric version, the VT 60A is air-operated for environments where electricity is not available or is undesirable, and the VT 60CR is designed specifically for cleanroom applications.

Features and Benefits

- Multi-stage filtration system designed for liquid or dry pick-up, with no filter change or adjustment
- Detachable trolley features sturdy polyethylene construction and large, smooth wheels for easy decontamination and added maneuverability
- Foam impact filter fits over and protects the float valve from clogging debris
- Pliable rubber inlet tube designed to relieve caking and clogging caused by collection of damp or sticky material
- Multiple accessories are available for a wide variety of applications



Technical Specifications

Description	Unit	VT 60	VT 60A	VT 60CR
Collection Type	-	Wet/Dry	Wet/Dry	Wet/Dry
Type of Power	-	1-Phase	1-Phase	1-Phase
Voltage @ 60 Hz	V	120	-	120
Power @ 60 Hz	HP (W)	1.34 (1000)	-	1.34 (1000)
Waterlift, max.	in. (mm) H ₂ O	117 (2972)	172 (4369)	117 (2972)
Airflow, max.	CFM (L/min)	99 (2803)	140 (3964)	99 (2803)
Current, max.	amps	8.3	-	8.3
Container Capacity	gal. (L)	15 (56.8)	15 (56.8)	15 (56.8)
Orifice Diameter, hose	mm	38	38	38
Dimensions (L x W x H)	in. x in. x in. (mm x mm x mm)	24.0 x 21.5 x 37.5 (610 x 546 x 953)	24.0 x 21.5 x 37.5 (610 x 546 x 953)	24.0 x 21.5 x 37.5 (610 x 546 x 953)
Weight	lbs. (kg)	65 (29)	60 (27)	65 (29)
Cord Length	ft. (m)	30 (9)	30 (9)	30 (9)
Sound Pressure Level @ 3'3" (ISO 3744)	dB(A)	75	77	75

Specifications and details are subject to change without prior notice.

Nilfisk GM 80P LC is light in weight, but a heavy-duty performer



Mounted on a strong steel trolley with large rubber wheels, the machine is easy to manoeuvre. Ideal for e.g. production lines, chemi/pharma industries, hospitals and offices.

The sturdy aluminium container means that the vacuum cleaner is almost indestructible and therefore especially suitable for rough and heavy duty cleaning.

For special applications, choose between two types of special exhaust filters: Nilfisk HEPA or Nilfisk ULPA, also protecting against allergies.

- Impressive 2100 cm² main filter in Polyester or cotton for even and stable airflow and vacuum, even after long use
- HEPA/ULPA exhaust filters optional
- Bagless operation possible
- Virtually indestructible aluminium container
- Lightweight and portable but built for years of heavy duty cleaning
- Available with L-class certification
- PTFE (non-stick) and Nomex (heat resistant) filter optional

Technical specifications

Description	Unit	GM 80P LC
Voltage	V	230
Frequency	Hz	50/60
IP protection class		IP20
Inlet	mm	38
Rated power	W	1200
Sound pressure level	dB(A)	66
Sound power level	dB(A)	75
Airflow	l/sec.	38
Vacuum	kPa	27
Suction power	W	270
Sound pressure BS 5415	dB(A)	61
Container capacity	l	12.25
Dust bag capacity	l	6.25
Cable length	m	10
Length x width x height	cm	390x300x410
Weight	kg	8

Specifications and details are subject to change without prior notice.



Large rubber wheels



Dust bag



Filter

ADDITIONAL INFORMATION

DUST MASK SELECTION GUIDE

Dust Mask Range	Hazard Reduction Factor	Protection Level	Protects Against
FFP1	x4	Low	Hand Sanding, Drilling, Cutting
FFP2	x12	Medium	Plastering and Sanding
FFP3	x20	High	Handling Hazardous Powders

Hazard Reduction Factor refers to how much protection that mask is capable of providing.

For example, a mask with a Hazard Reduction Factor of 12 will reduce the wearer's exposure by 12 times the Occupational Exposure Limit (OEL).

Why not view our mask selection and fit guide video on our website?

CLOTHING SIZE GUIDE

Size	Chest (cm)	Height (cm)
M	92-100	170-176
L	100-108	176-182
XL	108-116	182-188
XXL	116-124	188-194
XXXL	124-132	194-200

This size guide applies to all our Coveralls, Visitor Coats and Laboratory Coats.

Remember, you will need to add 20 to 25 cm onto your normal adult chest size to obtain a loose fit.

WOMEN'S FOOTWEAR SIZING GUIDE

Region	Size						
UK	3	4	5	6	6.5	7	8
Europe	36	37	38	39	40	41	42
USA	5.5	6	7	8	9	9.5	10

MEN'S FOOTWEAR SIZING GUIDE

Region	Size								
UK	6.5	7	8	9	10	10.5	11	12	13
Europe	40	41	42	43	44	45	46	47	48
USA	7	8	8.5	9.5	10.5	11	11.5	12.5	13.5