

Pressure Control Panels / Entspannungsstationen

VSP-1E Series

Product Features

- Pressure control panel
- VSR-1E series single-stage regulator
- Brass chrome plated body for non-corrosive gases and mixtures up to grade 6.0
- Stainless steel 316L body for corrosive gases
- Modular design
- Diaphragm type shut-off valves
- Suitable for inlet pressure up to 300 bar
- Easy installation into safety cabinet for gas cylinders
- Tested for use with oxygen



Typical Applications

- Component Testing
- Calibration Systems
- Laboratory Pressure Control
- High Pressure Sampling Systems
- Service & Test Equipment

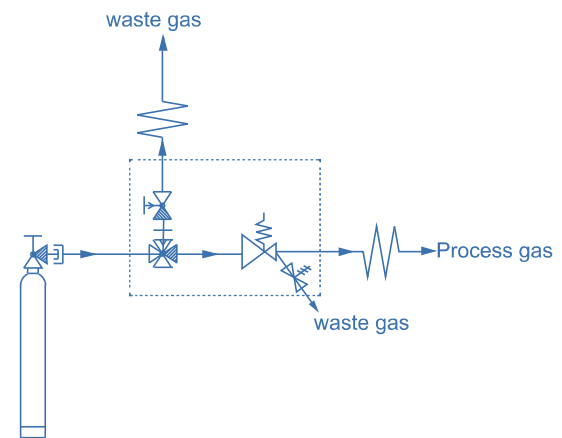


VDV1 for inlet 200bar

Technical Data

Type:	single-stage
Inlet pressure P ₁ :	max. 300 bar
Outlet pressure P ₂ :	2/4/10/20/ 50/100/200 bar
Materials:	
Body regulator and valves:	see ordering info
Valve seat (regulator):	PCTFE
(shut-off valve):	PCTFE(VDV30) PEEK(VDV1)
Diaphragm (regulator):	Hastelloy® C276
(valve):	Elgiloy®
O-ring:	Viton® (FKM)
(option)	Kalrez® (FFKM)
Filter:	SS 316L
Temperature range:	-30°C to +74°C
Leak rate: (to atmosphere)	1x10 ⁻⁸ mbar l/s He
(via seat)	1x10 ⁻⁶ mbar l/s He
Weight:	3.3 kg

Schematic Drawing



Flow Chart

