

FLAMMABLE SAFETY STORAGE CABINET



www.yakos65.com



yakos ™

TRIED & TRUSTED

FLAMMABLE SAFETY
STORAGE CABINET

www.yakos65.com





37 YEARS OF OPERATION

Yakos65, a registered brand of Chung Fu Technical Development Co., Ltd. was founded in 1976. Over the past 37 years of operation, Yakos65 has heavily relied on excellent R&D capabilities and strong manufacturing process. Yakos65 has developed a formidable range of high quality laboratory products and an accumulation of laboratory-built performance achievements; including laboratory planning and design, lab furniture, laboratory animal products, clean room, and zebra fish housing room. 'Chung Fu' has become an acclaimed laboratory product manufacturer, renown among colleges' institutions, research centers, hospitals, electronic / semiconductor companies and pharmaceutical companies in Taiwan and overseas.

CONTINUOUS TECHNOLOGY UPGRADES

Yakos65 meets international standards, regulations and industry criterias for quality policies, including an integrated product development procedure, procurement, manufacturing, assembly, inspection, packaging, sales and service. Each step of the process adheres to strict quality control to ensure total customer satisfaction, from start to finish. As a true testament of Yakos65's dedication to pioneering technological breakthroughs, it developed the first Asian flammable safety storage cabinet certified by FM Approvals and a biological safety cabinet certified by NSF.

PRODUCT PERFORMANCE AND SERVICE EXCELLENCE

Product performance and excellent service are Yakos65's core competencies. Having the right staff has always been the reason behind Yakos65's success. the R&D and manufacturing teams guarantee that each and every product passes the most stringent inspection before leaving the factory and is delivered to the customer on time.

TRIED & TRUSTED

It is important that each customer tries and experiences Yakos65's products so they can actually grasp the full benefits. As Yakos65's slogan goes; our products are "Tried & Trusted". In addition to continuously providing you with a safer and more reliable product, Yakos65 strives to strengthen policy commitments for a sustainable management system.





2



The Only Flammable Safety Storage Cabinet FM Approved in Asia

FLAMMABLE SAFETY STORAGE CABINET

www.yakos65.com

TRIED & TRUSTED



Improving the workplace environment should start with safety

According to a survey Yakos65 organised, it found that in most industrial fire incidents, the direct or indirect causes are associated with the flammability classification of goods, storage and disposal. In essence, most accidents could be avoided. Since fire accidents often lead to major disasters, resulting in loss of life and in huge corporate property loss, it is extremely important to correctly store and classify flammable substances.

The SafetyStar® flammable safety storage cabinet is the first Asian storage cabinet certified by FM Approvals. Yakos65 hopes to meet its clients' highest quality standards by implementing the most stringent international testing procedures to enhance workplace safety. Yakos65 believes that a safe environment is the only way forward.

About FM (Factory Mutual)

FM (Factory Mutual) was founded in 1897, and is the world's largest industrial and commercial life insurance company. Its customers cover 132 countries globally with a total of more than 10 million insurance programs. It provides a full range of insurance projects as well as engineering and technology-oriented risk management solutions. With one hundred years of rigorous scientific research and pioneering product testing technology, it is only natural that it attracts some of the world's largest and most successful technology giants. Therefore, it comes as no surprise that Yakos65' clients expect nothing less than FM certified products to safeguard their livelihood.

The significance of the FM Approval mark

FM provides testing and accreditation services to global industrial and commercial products through FM Approvals. FM Approvals is recognized as the top product testing and certification organisation in the world, and is specified as the National Accreditation Laboratory (NRTL) in the United States Occupational Safety and Health Administration (OSHA). It is also recognized by the American National Standards Institute (ANSI) as a standard-setting body. FM Approvals' comprehensive accreditation services, expertise, and partnerships ensure that all their approved products and services can be released in the global market quickly.

Any product affixed with the FM Approval mark has endured and passed the highest testing standards in the United States and the world. It is a symbol of quality excellence, a guarantee over fire prevention, work safety and environmental protection.



SafetyStar[®] World-Class Products for Fire Prevention

Any flammable item should be stored appropriately in a safety storage cabinet.

All SafetyStar[®] series cabinets are FM Approved and comply with NFPA and OSHA regulations.



4



30 Gallon

45 Gallon

30 Gallon

THE FIRST & ONLY FLAMMABLE SAFETY CABINET MANUFACTURER APPROVED BY FM IN ASIA.

Chemical Storage Direction and Cabinet Colors



Yellow for flammable liquids



Red for combustible liquids



Blue for corrosive liquids



90 Gallon

12 Gallon

22 Gallon

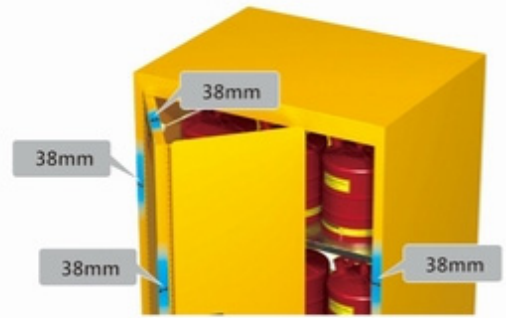


5

- PROVIDES WORKERS AND ENVIRONMENT OPTIMUM SAFETY AND QUALITY ASSURANCE.
- PROVIDES MAXIMUM PROPERTY AND ASSET PROTECTION.
- PREVENTS EXPLOSION, EXTENSION OF A FIRE.

CABINET CONSTRUCTION

Double-wall cabinet construction with thickness of 1.2mm steel and 38mm air space efficiently isolates from combustion.



Safety Comes from **SafetyStar**[®] Foresight Design and State of Art Technology



STEEL PIANO HINGE

1.2mm steel continuous piano hinge provides smooth closure, reliable and durable use.



DOOR CORNERS

Rounded corners avoid potential hand injury.



PADDLE HANDLE LATCH

Eliminates projecting obstacles. Easy open and close.



3-POINT LOCK



Non-sparking, 3-point linked latching device provides better security.



DUAL VENTS

Dual vents with flame arrester placed on both sides of the cabinets.



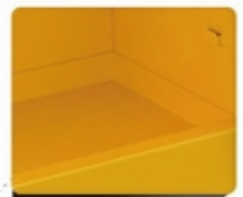
FLAME ARRESTER

To prevent exterior flame to enter the cabinet body and to prevent flame flees out from the safety cabinet.



UL listed

Able to guide static electricity to the ground, avoiding explosion caused by sparks.



LEAK-TIGHT SUMP

2 inch deep leak-tight containment sump for accidental drips and spills.



LEVELERS

4 full steel adjustable levelers installed in base for stability.

For Fire Prevention, Work Safety, Environmental Protection. Reduces Your Industrial Safety Risks Once and for All.



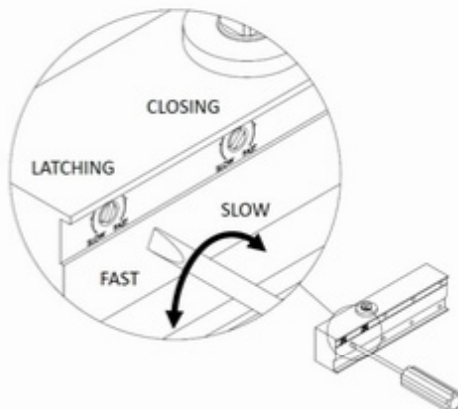
MANUAL CLOSING

- Economical and practical type.
- Three cabinet styles: single-door cabinets, double-door cabinets and sliding-door cabinets.
- Non-sparking, 3-point linked latching device provides superior security.



SELF-CLOSING

- Three cabinet styles: single-door cabinets, double-door cabinets and sliding-door cabinets.
- Built-in thermal-sensitive device releases and closes door automatically if the cabinet is exposed at 74°C.
- Non-sparking, 3-point linked latching device provides superior security. Two way sections door closing, adjustable speed.
- When door opening angle is smaller than 85 degree, the door will automatically close.(sliding-door cabinets excluded)
- When door opening angle is greater than 90 degree, the door will stay open at its position.(sliding-door cabinets excluded)



▲ Two way sections door closing, adjustable speed.



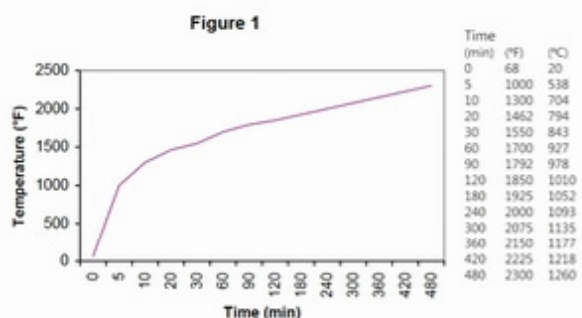
▲ Steel adjustable shelves with 120kg loading capacity. Front and rear quick safety latch with closely integrated shelves and support frame reduces risks of collision.



▲ Both manual and self-closing doors can be fully opened to 180°. Easy operation.



▲ Cabinet fire exposure test conducted by FM Approvals.



▲ Fire Exposure Test - ASTM E152 Time-Temperature Curve



Low Corrosive Liquid Storage Cabinets



IN ADDITION TO FLAMMABLE LIQUIDS, THERE ARE ALSO A LOT OF CORROSIVE CHEMICAL STORED IN THE LABORATORIES AND INDUSTRIAL PLANTS. SAFETYSTAR® BLUE LOW-CORROSIVE LIQUID STORAGE CABINET IS YOUR BEST CHOICE. DOUBLE-WALL 1.2MM STEEL PLATE STRUCTURE, COATED WITH A UNIQUE ANTI-CORROSIVE BAKING PAINT FOR STORAGE OF LOW CORROSIVE ACID / ALKALI LIQUID INCLUDES LOW CONCENTRATIONS OF CHEMICAL SUCH AS HYDROCHLORIC ACID, SULFURIC ACID, NITRIC ACID, AMMONIA AND SODIUM HYPOCHLORITE.

- All SafetyStar® series low corrosive liquid cabinets listed are FM Approved and comply with NFPA and OSHA regulations.
- Provides exactly the same functions and design characteristics as the flammable liquid storage cabinets.
- Double-wall cabinet construction with thickness of 1.2mm steel and 38mm air space efficiently isolates from combustion.
- Non-sparking, 3-point linked latching device provides superior security.
- Dual vents with flame arrester placed on both sides of cabinets.
- Steel adjustable shelves for 120kg loading. Front and rear quick safety latch with closely integrated shelves and support frame reduces risks of collision.
- Optional high-strength anti-corrosive PP/PE material trays can be placed on the shelves and the sump for double anti-corrosion option.
- 2 inch deep leak-tight containment sump for accidental drips and spills.

Manual/self-closing single-door cabinets



Manual/self-closing double-door cabinets

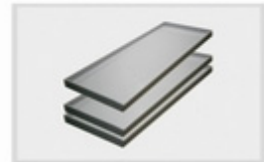


Manual/self-closing sliding-door cabinets



PP Tray

This high corrosion resistance PP tray can be placed on shelf inside the safety cabinet to collect spill chemicals or solvents.



Combustible Liquid Storage Cabinets



ALL SAFETYSTAR® SERIES COMBUSTIBLE LIQUID CABINETS LISTED ARE FM APPROVED AND COMPLY WITH NFPA AND OSHA REGULATIONS.

- Same functions and design characteristics as the flammable liquid storage cabinets.
- Suitable for storing paints, inks and mineral oil.
- Double-wall cabinet construction with thickness of 1.2mm steel and 38mm air space efficiently isolates from combustion.
- Non-sparking, 3-point linked latching device provides superior security.
- Dual vents with flame arrester placed on both sides of the cabinets.
- Adjustable steel shelf can hold 120kg load.

Manual/self-closing single-door cabinets



Manual/self-closing double-door cabinets



Manual/self-closing sliding-door cabinets



Single-Door Cabinets



Built-in adjustable shelves for storing small items with the same design and functions as other cabinets.

The Only 4 Gallon Safety Cabinet Approved by FM Global in the world.



4 Gallon



12 Gallon



15 Gallon

Yellow Order Number	Blue Order Number	Red Order Number	External Dim. W*D*H mm	Internal Dim. W*D*H mm	Capacity Gal.(L)	# of Shelves	Door Type
S1004Y-R	S1004B-R	S1004R-R	435*435*630	352*352*481	4 (15)	1	Self-close / Right hand
S1012Y-R	S1012B-R	S1012R-R	595*460*960	512*377*811	12(45)	1	Self-close / Right hand
S1015Y-R	S1015B-R	S1015R-R	595*460*1190	512*377*1041	15(57)	1	Self-close / Right hand
M1004Y-R	M1004B-R	M1004R-R	435*435*630	352*352*481	4 (15)	1	Manual / Right hand
M1012Y-R	M1012B-R	M1012R-R	595*460*960	512*377*811	12(45)	1	Manual / Right hand
M1015Y-R	M1015B-R	M1015R-R	595*460*1190	512*377*1041	15(57)	1	Manual / Right hand
S1004Y-L	S1004B-L	S1004R-L	435*435*630	352*352*481	4 (15)	1	Self-close / Left hand
S1012Y-L	S1012B-L	S1012R-L	595*460*960	512*377*811	12(45)	1	Self-close / Left hand
S1015Y-L	S1015B-L	S1015R-L	595*460*1190	512*377*1041	15(57)	1	Self-close / Left hand
M1004Y-L	M1004B-L	M1004R-L	435*435*630	352*352*481	4 (15)	1	Manual / Left hand
M1012Y-L	M1012B-L	M1012R-L	595*460*960	512*377*811	12(45)	1	Manual / Left hand
M1015Y-L	M1015B-L	M1015R-L	595*460*1190	512*377*1041	15(57)	1	Manual / Left hand

Detailed Specifications

※ Extra shelves can be ordered.



Right Hand Door Type: Opened by The Right Hand



Double-Door Cabinets



Most Widely Use Types.



30 Gallon



45 Gallon



60 Gallon



90 Gallon

Yellow Order Number	Blue Order Number	Red Order Number	External Dim. W*D*H mm	Internal Dim. W*D*H mm	Capacity Gal.(L)	# of Shelves	Door Type
S2030Y	S2030B	S2030R	1090*460*1190	1007*375*1041	30(114)	1	Self-close
S2045Y	S2045B	S2045R	1090*460*1720	1007*375*1574	45(170)	2	Self-close
S2060Y	S2060B	S2060R	860*860*1720	778*778*1574	60(227)	2	Self-close
S2090Y	S2090B	S2090R	1090*860*1720	1007*778*1574	90(340)	2	Self-close
M2030Y	M2030B	M2030R	1090*460*1190	1007*375*1041	30(114)	1	Manual
M2045Y	M2045B	M2045R	1090*460*1720	1007*375*1574	45(170)	2	Manual
M2060Y	M2060B	M2060R	860*860*1720	778*778*1574	60(227)	2	Manual
M2090Y	M2090B	M2090R	1090*860*1720	1007*778*1574	90(340)	2	Manual

Detailed Specifications

※ Extra shelves can be ordered.

Slender-type Cabinets



High Capacity Storage For Limited Space.



22 Gallon



54 Gallon

Yellow Order Number	Blue Order Number	Red Order Number	External Dim. W*D*H mm	Internal Dim. W*D*H mm	Capacity Gal.(L)	# of Shelves	Door Type
S1022Y-R	S1022B-R	S1022R-R	595*460*1720	512*378*1574	22(83)	3	Self-close / Right hand
S1054Y-R	S1054B-R	S1054R-R	595*860*1720	512*778*1574	54(204)	3	Self-close / Right hand
M1022Y-R	M1022B-R	M1022R-R	595*460*1720	512*378*1574	22(83)	3	Manual / Right hand
M1054Y-R	M1054B-R	M1054R-R	595*860*1720	512*778*1574	54(204)	3	Manual / Right hand
S1022Y-L	S1022B-L	S1022R-L	595*460*1720	512*378*1574	22(83)	3	Self-close / Left hand
S1054Y-L	S1054B-L	S1054R-L	595*860*1720	512*778*1574	54(204)	3	Self-close / Left hand
M1022Y-L	M1022B-L	M1022R-L	595*460*1720	512*378*1574	22(83)	3	Manual / Left hand
M1054Y-L	M1054B-L	M1054R-L	595*860*1720	512*778*1574	54(204)	3	Manual / Left hand

Detailed Specifications

※ Extra shelves can be ordered.

Undercounter Cabinets



Can be installed under work desks, laboratory tables and chemical fume hoods. Provides space-saving characteristics and offers convenient access to goods.

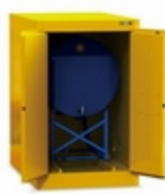


Yellow Order Number	Blue Order Number	Red Order Number	External Dim. W*D*H mm	Internal Dim. W*D*H mm	Capacity Gal.(L)	# of Shelves	Door Type
S2022Y-1	S2022B-1	S2022R-1	1415*520*740	1332*434*591	22(83)	1	Self-close / Double door
S2022Y-2	S2022B-2	S2022R-2	1415*520*570	1332*434*421	22(83)	1	Self-close / Double door
S2022Y-3	S2022B-3	S2022R-3	1115*520*740	1032*434*591	22(83)	1	Self-close / Double door
S2022Y-4	S2022B-4	S2022R-4	1115*520*570	1032*434*421	22(83)	1	Self-close / Double door
M2022Y-1	M2022B-1	M2022R-1	1415*520*740	1332*434*591	22(83)	1	Manual / Double door
M2022Y-2	M2022B-2	M2022R-2	1415*520*570	1332*434*421	22(83)	1	Manual / Double door
M2022Y-3	M2022B-3	M2022R-3	1115*520*740	1032*434*591	22(83)	1	Manual / Double door
M2022Y-4	M2022B-4	M2022R-4	1115*520*570	1032*434*421	22(83)	1	Manual / Double door

Detailed Specifications

※ Extra shelves can be ordered.

Drum Cabinets



Horizontal
55 Gallon



Vertical
55 Gallon

Yellow Order Number	Blue Order Number	Red Order Number	External Dim. W*D*H mm	Internal Dim. W*D*H mm	Capacity Gal.(L)	# of Shelves	Door Type
S2055Y-H	S2055B-H	S2055R-H	760*1220*1340	677*1137*1193	55(208)	-	Self-close / Double door
M2055Y-H	M2055B-H	M2055R-H	760*1220*1340	677*1137*1193	55(208)	-	Manual / Double door
S2055Y-V	S2055B-V	S2055R-V	860*860*1720	778*778*1574	55(208)	1	Self-close / Double door
M2055Y-V	M2055B-V	M2055R-V	860*860*1720	778*778*1574	55(208)	1	Manual / Double door

Detailed Specifications



Gas Cylinder Cabinets



Built-in casting aluminum alloy U-shaped holder and adjustable nylon straps. Ideal to fix all kinds of gas cylinders. Slip steel ramp plate facilitates the cylinders up and down.



Yellow Order Number	Blue Order Number	Red Order Number	External Dim. W*D*H mm	Internal Dim. W*D*H mm	Capacity Gal. (L)	# of Shelves	Door Type
S2045Y-G	S2045B-G	S2045R-G	1090*460*1720	1007*375*1574	45(170)	-	Self-close / Double door
M2045Y-G	M2045B-G	M2045R-G	1090*460*1720	1007*375*1574	45(170)	-	Manual / Double door

Detailed Specifications

Sliding-Door Cabinets



30 Gallon

45 Gallon

60 Gallon

90 Gallon

Yellow Order Number	Blue Order Number	Red Order Number	External Dim. W*D*H mm	Internal Dim. W*D*H mm	Capacity Gal. (L)	# of Shelves	Door Type
S3030Y-R	S3030B-R	S3030R-R	1090*460*1190	1007*375*1041	30(114)	1	Self-close / Right hand
S3045Y-R	S3045B-R	S3045R-R	1090*460*1720	1007*375*1574	45(170)	2	Self-close / Right hand
S3060Y-R	S3060B-R	S3060R-R	860*860*1720	778*778*1574	60(227)	2	Self-close / Right hand
S3090Y-R	S3090B-R	S3090R-R	1090*860*1720	1007*778*1574	90(340)	2	Self-close / Right hand
M3030Y-R	M3030B-R	M3030R-R	1090*460*1190	1007*375*1041	30(114)	1	Manual / Right hand
M3045Y-R	M3045B-R	M3045R-R	1090*460*1720	1007*375*1574	45(170)	2	Manual / Right hand
M3060Y-R	M3060B-R	M3060R-R	860*860*1720	778*778*1574	60(227)	2	Manual / Right hand
M3090Y-R	M3090B-R	M3090R-R	1090*860*1720	1007*778*1574	90(340)	2	Manual / Right hand
S3030Y-L	S3030B-L	S3030R-L	1090*460*1190	1007*375*1041	30(114)	1	Self-close / Left hand
S3045Y-L	S3045B-L	S3045R-L	1090*460*1720	1007*375*1574	45(170)	2	Self-close / Left hand
S3060Y-L	S3060B-L	S3060R-L	860*860*1720	778*778*1574	60(227)	2	Self-close / Left hand
S3090Y-L	S3090B-L	S3090R-L	1090*860*1720	1007*778*1574	90(340)	2	Self-close / Left hand
M3030Y-L	M3030B-L	M3030R-L	1090*460*1190	1007*375*1041	30(114)	1	Manual / Left hand
M3045Y-L	M3045B-L	M3045R-L	1090*460*1720	1007*375*1574	45(170)	2	Manual / Left hand
M3060Y-L	M3060B-L	M3060R-L	860*860*1720	778*778*1574	60(227)	2	Manual / Left hand
M3090Y-L	M3090B-L	M3090R-L	1090*860*1720	1007*778*1574	90(340)	2	Manual / Left hand

Detailed Specifications

Explosion-Protected Solvent Waste Fume Hood

This fume hood is used to store solvent waste. It will discharge the gas waste, which maintains the work area safe and secure.

- Main material: Chemical anti-corrosion boards.
- Adjustable over-loading protection for electrical control.
- Explosion-proof knob-type switches for fluorescent light and blower.
- Explosion-protected housing: A356 copper-free aluminum alloy of the U.S. Aluminum Association. Enclosure IP66.
- The electrical module qualified for CE or UL.
- Hanging rail, three piece of tempered glass sliding door with explosion-proof membrane of 13 weaved net structure, providing much higher explosion-proof requirement.
- Molded structure, quick assembly and disconnect on site.
- Ultra-thin side wall design, the internal operating width is above 97% of the external width.
- Reinforced steel base with transportation ramp for easier and more convenient carry.
- Available voltage: 110/220V, please confirm when ordering.

Model No.	External Dim. W*D*H mm	Internal Dim. W*D*H mm
HAQ-180	1800*860*2225	1771*630*1900
HAQ-210	2100*860*2225	2070*630*1900



▲ Explosion-proof switches



▲ Explosion-proof lights



Order Number & Model Number Comparison Sheet

Single-Door Cabinets

Yellow Order No.	Yellow Model No.	Blue Order No.	Blue Model No.	Red Order No.	Red Model No.
S1004Y-R	CCG-004-AA-A	S1004B-R	CCG-004-AA-B	S1004R-R	CCG-004-AA-C
S1012Y-R	CCG-012-AA-A	S1012B-R	CCG-012-AA-B	S1012R-R	CCG-012-AA-C
S1015Y-R	CCG-015-AA-A	S1015B-R	CCG-015-AA-B	S1015R-R	CCG-015-AA-C
M1004Y-R	CCG-004-BA-A	M1004B-R	CCG-004-BA-B	M1004R-R	CCG-004-BA-C
M1012Y-R	CCG-012-BA-A	M1012B-R	CCG-012-BA-B	M1012R-R	CCG-012-BA-C
M1015Y-R	CCG-015-BA-A	M1015B-R	CCG-015-BA-B	M1015R-R	CCG-015-BA-C
S1004Y-L	CCG-004-CA-A	S1004B-L	CCG-004-CA-B	S1004R-L	CCG-004-CA-C
S1012Y-L	CCG-012-CA-A	S1012B-L	CCG-012-CA-B	S1012R-L	CCG-012-CA-C
S1015Y-L	CCG-015-CA-A	S1015B-L	CCG-015-CA-B	S1015R-L	CCG-015-CA-C
M1004Y-L	CCG-004-DA-A	M1004B-L	CCG-004-DA-B	M1004R-L	CCG-004-DA-C
M1012Y-L	CCG-012-DA-A	M1012B-L	CCG-012-DA-B	M1012R-L	CCG-012-DA-C
M1015Y-L	CCG-015-DA-A	M1015B-L	CCG-015-DA-B	M1015R-L	CCG-015-DA-C

Double-Door Cabinets

Yellow Order No.	Yellow Model No.	Blue Order No.	Blue Model No.	Red Order No.	Red Model No.
S2030Y	CCE-030-AA-A	S2030B	CCE-030-AA-B	S2030R	CCE-030-AA-C
S2045Y	CCE-045-AA-A	S2045B	CCE-045-AA-B	S2045R	CCE-045-AA-C
S2060Y	CCE-060-AA-A	S2060B	CCE-060-AA-B	S2060R	CCE-060-AA-C
S2090Y	CCE-090-AA-A	S2090B	CCE-090-AA-B	S2090R	CCE-090-AA-C
M2030Y	CCE-030-BA-A	M2030B	CCE-030-BA-B	M2030R	CCE-030-BA-C
M2045Y	CCE-045-BA-A	M2045B	CCE-045-BA-B	M2045R	CCE-045-BA-C
M2060Y	CCE-060-BA-A	M2060B	CCE-060-BA-B	M2060R	CCE-060-BA-C
M2090Y	CCE-090-BA-A	M2090B	CCE-090-BA-B	M2090R	CCE-090-BA-C

Slender-type Cabinets

Yellow Order No.	Yellow Model No.	Blue Order No.	Blue Model No.	Red Order No.	Red Model No.
S1022Y-R	CCH-022-AA-A	S1022B-R	CCH-022-AA-B	S1022R-R	CCH-022-AA-C
S1054Y-R	CCH-054-AA-A	S1054B-R	CCH-054-AA-B	S1054R-R	CCH-054-AA-C
M1022Y-R	CCH-022-BA-A	M1022B-R	CCH-022-BA-B	M1022R-R	CCH-022-BA-C
M1054Y-R	CCH-054-BA-A	M1054B-R	CCH-054-BA-B	M1054R-R	CCH-054-BA-C
S1022Y-L	CCH-022-CA-A	S1022B-L	CCH-022-CA-B	S1022R-L	CCH-022-CA-C
S1054Y-L	CCH-054-CA-A	S1054B-L	CCH-054-CA-B	S1054R-L	CCH-054-CA-C
M1022Y-L	CCH-022-DA-A	M1022B-L	CCH-022-DA-B	M1022R-L	CCH-022-DA-C
M1054Y-L	CCH-054-DA-A	M1054B-L	CCH-054-DA-B	M1054R-L	CCH-054-DA-C

Undercounter Cabinets

Yellow Order No.	Yellow Model No.	Blue Order No.	Blue Model No.	Red Order No.	Red Model No.
S2022Y-1	CCI-022-AA-A	S2022B-1	CCI-022-AA-B	S2022R-1	CCI-022-AA-C
S2022Y-2	CCI-022-AB-A	S2022B-2	CCI-022-AB-B	S2022R-2	CCI-022-AB-C
S2022Y-3	CCI-022-AC-A	S2022B-3	CCI-022-AC-B	S2022R-3	CCI-022-AC-C
S2022Y-4	CCI-022-AD-A	S2022B-4	CCI-022-AD-B	S2022R-4	CCI-022-AD-C
M2022Y-1	CCI-022-BA-A	M2022B-1	CCI-022-BA-B	M2022R-1	CCI-022-BA-C
M2022Y-2	CCI-022-BB-A	M2022B-2	CCI-022-BB-B	M2022R-2	CCI-022-BB-C
M2022Y-3	CCI-022-BC-A	M2022B-3	CCI-022-BC-B	M2022R-3	CCI-022-BC-C
M2022Y-4	CCI-022-BD-A	M2022B-4	CCI-022-BD-B	M2022R-4	CCI-022-BD-C



Drum Cabinets

Yellow Order No.	Yellow Model No.	Blue Order No.	Blue Model No.	Red Order No.	Red Model No.
S2055Y-H	CCK-055-AA-A	S2055B-H	CCK-055-AA-B	S2055R-H	CCK-055-AA-C
M2055Y-H	CCK-055-BA-A	M2055B-H	CCK-055-BA-B	M2055R-H	CCK-055-BA-C
S2055Y-V	CCL-055-AA-A	S2055B-V	CCL-055-AA-B	S2055R-V	CCL-055-AA-C
M2055Y-V	CCL-055-BA-A	M2055B-V	CCL-055-BA-B	M2055R-V	CCL-055-BA-C

Gas Cylinder Cabinets

Yellow Order No.	Yellow Model No.	Blue Order No.	Blue Model No.	Red Order No.	Red Model No.
S2045Y-G	CCE-045-AA-A	S2045B-G	CCE-045-AA-B	S2045R-G	CCE-045-AA-C
M2045Y-G	CCE-045-BA-A	M2045B-G	CCE-045-BA-B	M2045R-G	CCE-045-BA-C

Sliding-Door Cabinets

Yellow Order No.	Yellow Model No.	Blue Order No.	Blue Model No.	Red Order No.	Red Model No.
S3030Y-R	CCF-030-AA-A	S3030B-R	CCF-030-AA-B	S3030R-R	CCF-030-AA-C
S3045Y-R	CCF-045-AA-A	S3045B-R	CCF-045-AA-B	S3045R-R	CCF-045-AA-C
S3060Y-R	CCF-060-AA-A	S3060B-R	CCF-060-AA-B	S3060R-R	CCF-060-AA-C
S3090Y-R	CCF-090-AA-A	S3090B-R	CCF-090-AA-B	S3090R-R	CCF-090-AA-C
M3030Y-R	CCF-030-BA-A	M3030B-R	CCF-030-BA-B	M3030R-R	CCF-030-BA-C
M3045Y-R	CCF-045-BA-A	M3045B-R	CCF-045-BA-B	M3045R-R	CCF-045-BA-C
M3060Y-R	CCF-060-BA-A	M3060B-R	CCF-060-BA-B	M3060R-R	CCF-060-BA-C
M3090Y-R	CCF-090-BA-A	M3090B-R	CCF-090-BA-B	M3090R-R	CCF-090-BA-C
S3030Y-L	CCF-030-CA-A	S3030B-L	CCF-030-CA-B	S3030R-L	CCF-030-CA-C
S3045Y-L	CCF-045-CA-A	S3045B-L	CCF-045-CA-B	S3045R-L	CCF-045-CA-C
S3060Y-L	CCF-060-CA-A	S3060B-L	CCF-060-CA-B	S3060R-L	CCF-060-CA-C
S3090Y-L	CCF-090-CA-A	S3090B-L	CCF-090-CA-B	S3090R-L	CCF-090-CA-C
M3030Y-L	CCF-030-DA-A	M3030B-L	CCF-030-DA-B	M3030R-L	CCF-030-DA-C
M3045Y-L	CCF-045-DA-A	M3045B-L	CCF-045-DA-B	M3045R-L	CCF-045-DA-C
M3060Y-L	CCF-060-DA-A	M3060B-L	CCF-060-DA-B	M3060R-L	CCF-060-DA-C
M3090Y-L	CCF-090-DA-A	M3090B-L	CCF-090-DA-B	M3090R-L	CCF-090-DA-C



Other Accessories

Emergency Information Cabinet

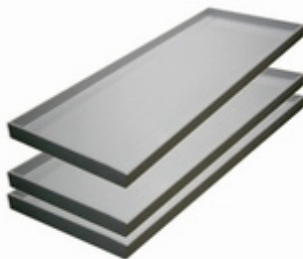
- Store important documents or emergency information, such as Material Safety Data Sheet (MSDS).
- Large or small; two sizes available
- Galvanized steel material.
- Lockable, rain-proof (weatherproof).

Model No.	External Dim. W*D*H mm
350	350*100*425
500	500*156*600



PP Tray

This high corrosion resistance PP tray can be placed on shelf inside the safety cabinet to collect spill chemicals or solvents.



Earth Clamps (Grounding)

Guiding the static electricity to the ground, avoid explosion caused by sparks.



Oil Drum

- Model No. OCN-CG20(Green)
OCN-CR20(Red)
- Capacity 20 liters.
- Galvanization steel material.
- "UN" Approved.



Oil Drum

- Model No. OCN-CS20
- Capacity 20 liters.
- Stainless steel material.
- "UN" Approved.



Oil Drum

- Model No. OCN-BS20
- Capacity 20 liters.
- Stainless steel material.
- "UN" Approved.



Oil Drum

- Model No. OCN-BG20
- Capacity 20 liters.
- Galvanization steel material.
- "UN" Approved.



Organic Solvent Waste Container

- Model No. WCN-A03
- Capacity 20 liters.
- High Density Polyethylene (HDPE) material with stainless steel handle.



Non-Organic Solvent Waste Container

- Model No. WCN-A04
- Capacity 20 liters.
- High Density Polyethylene (HDPE) material.





Yakos65's responsibility is to provide customers with comprehensive solutions.
Please let us know what you are looking for so that we can process your inquiry as quickly and efficiently as possible.

EMAIL sales@yakos65.com | TEL +886 2 2600 1761

For more detailed information, please visit Yakos65 website at www.yakos65.com



ISO 9001



CHUNG FU TECHNICAL DEVELOPMENT CO., LTD

No.33-1, NanShih, LinKou Dist., New Taipei City 244, Taiwan
TEL: +886 2 2600 1761 & FAX: +886 2 2600 6801
EMAIL: sales@yakos65.com

www.yakos65.com

www.chungfu.com.tw

Biological Safety Cabinet | Flammable Safety Storage Cabinet | Zebra Fish Housing System | Lab Planning & Design | Lab Animal Room Planning & Design
Zebra Fish Room Planning & Design | Lab Furniture / Chemical Fume Hood | Lab Animal Housing Products